



General practitioners



530 general practices (1.9 million enlisted persons = 11%)

annual extraction of data from electronic medical records

40 sentinel practices (140.000 enlisted persons = 0.8%)

information that is not available from routine electronic health records

Influenza surveillance

Acute respiratory infection: ILI yes/no?



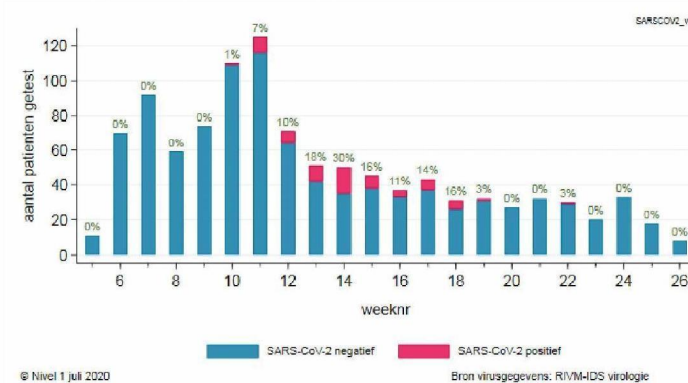
→ ILI incidence

Samples from a selection of patients with ILI/ARI (nose and throat swabs)

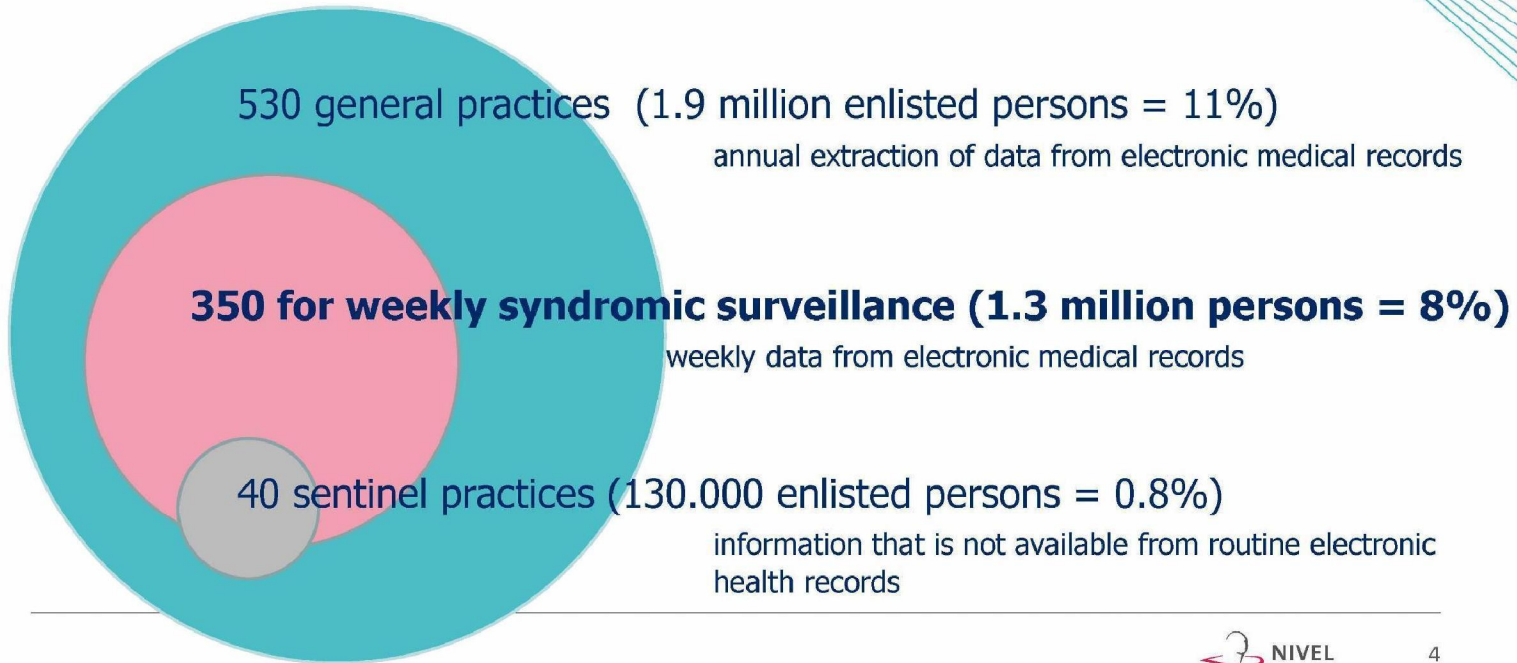
→ RIVM 5.1.2e

influenza virus, rhino virus, RS virus, enterovirus

week 5, 2020: SARS-CoV-2



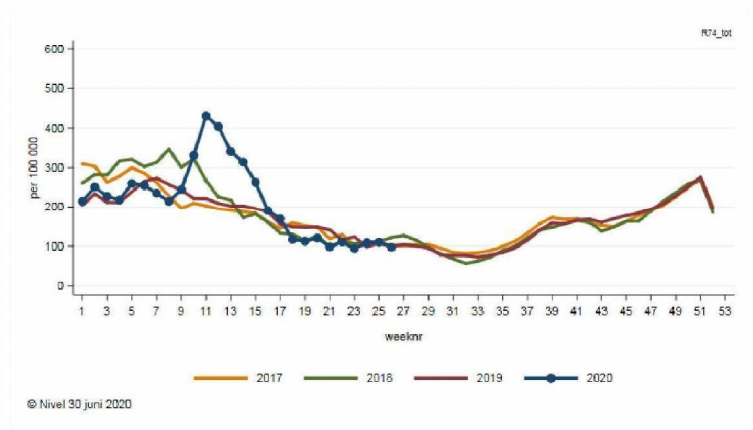
General practitioners



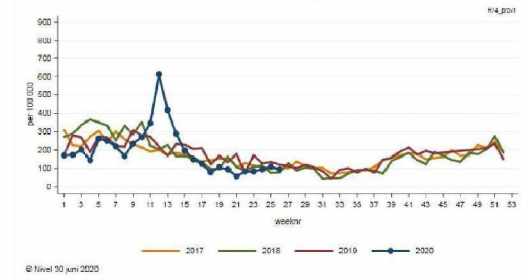
Clinical diagnosis codes (ICPC)

R74 – Acute upper respiratory infection

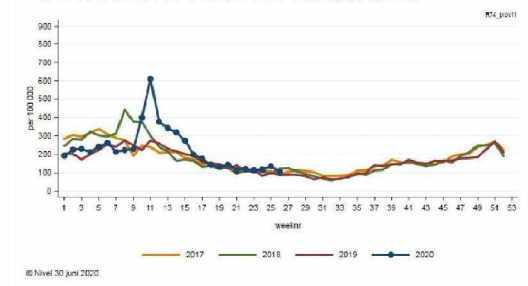
Netherlands



Province Groningen



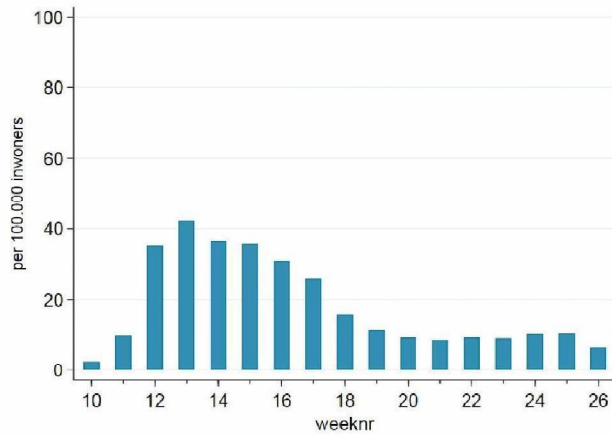
Province North Brabant



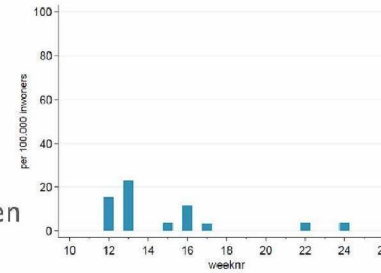
Clinically confirmed COVID-19

COVID-19 related diagnosis (ICPC) codes **PLUS** screening of episode title/text

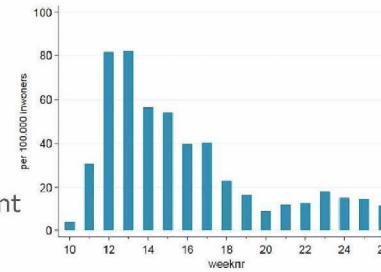
Netherlands



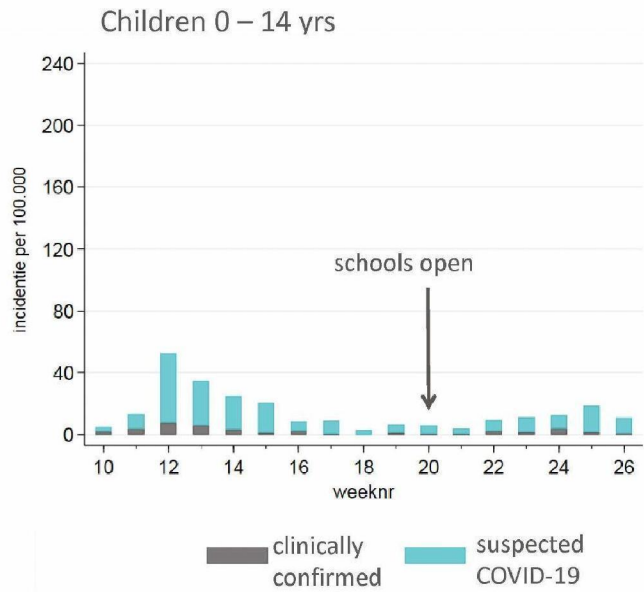
Province Groningen



Province North Brabant



Suspected COVID-19



coronadashboard.rijksoverheid.nl/

Aantal patiënten waarvan huisartsen COVID-19 vermoeden

Aantal door de huisarts geregistreerde verdenkingen van COVID-19, per 100.000 inwoners, per week.

11,7

Meer uitleg en data ▾



Lessons learned

- Changes in health care seeking behaviour

Do not go to the GP, unless severe symptoms

- Changes in organization of primary health care

Dedicated COVID-19 health care centres

- Large geographic differences
- Changes in use of diagnosis codes
- Flexibility to include SARS-CoV-2 testing (RIVM) and text mining (Nivel)

